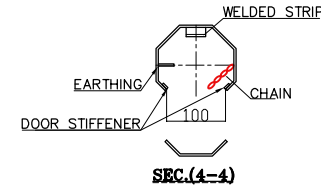
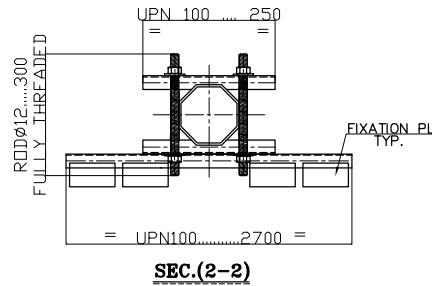
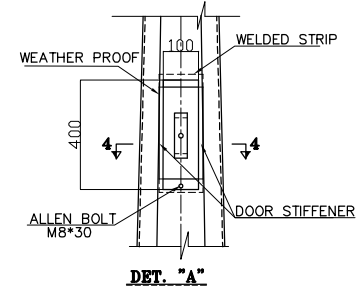
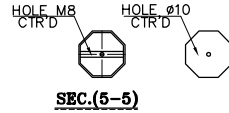


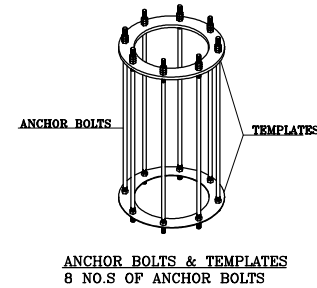
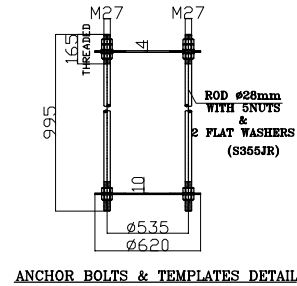
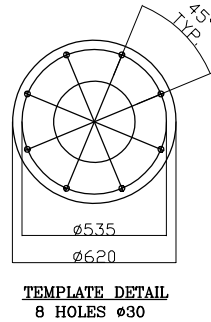
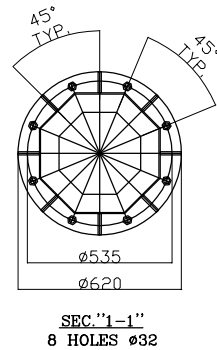
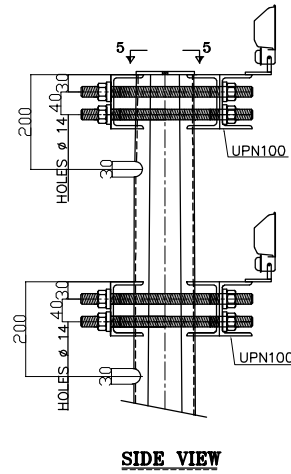
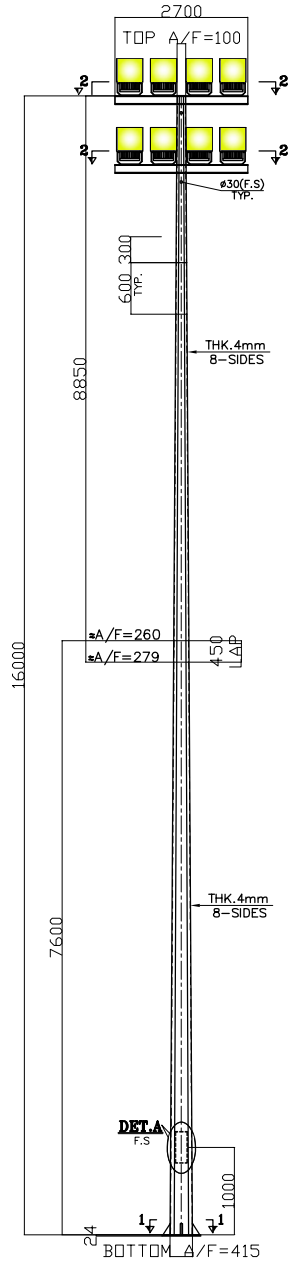
8 NO.S OF FLOOD LIGHT
TANGO G3 : BVP384 LED725-580w
SUPPLY BY OTHER



NOTES:-

- 1-DESIGN PER AASHTO , STANDARD SPECIFICATION FOR STRUCTURAL SUPPORT FOR HIGHWAY SIGNS, LUMINAIRES & TRAFFIC SIGNALS.
- 2-DESIGN WIND SPEED =120 km/hr.(3SEC. GUST).
- 3-MATERIALS USED :ALL MATERIALS ARE S235JR EN 10025 EXCEPT ANCHOR BOLTS ARE S355JR
- 4-ALL STEEL PARTS ARE HOT DIPPED GALVANIZED TO BS EN ISO 1461:2009 EXCEPT ACC. ARE C.D.G .
- 5-DIMENSIONS ARE IN m.m, UNLESS OTHERWISE SPECIFIED
- 6-BOND STRESS BETWEEN ANCHOR BOLTS & CONCRETE=1N/mm².
- 7-FLOOD LIGHT ARE: WT=18.99kg ,Area=0.344m²,
- 8- EFFECTED PROJECTED AREA =4.22m²
- 9-DUE DETAIL TO PRESENT DEVELOPMENTS THE DETAILS OF ACC. MAY BE CHANGED DURING FABRICATION
- 10-TOLERANCE ARE ACCORDING TO AASHTO .

BBT
LIGHTING



12					
11					
10					
9					
8					
7					
6					
5					
4					
3					
2					
1					
0					
REV.	DATE	DESCRIPTION	NAME		
TITLE: GENERAL LAYOUT			NAME	DATE	
PROJECT: HIGHMAST 16m CARRYING 8 FLOOD LIGHTS			DRAWN		
			CHECK'D		
			APP'D		
DWG NO.			INQ. NO.		
CODE NO.			ABBREVIATIONS USED IN DRAWING		
DO NOT SCALE DRAWING			REVISION NO.	6/9	